



Hear now. And always

2012



Southern Sounds

WELCOME

Welcome to the first edition of Southern Sounds 2012!

We at Southern ENT are excited about the year ahead and look forward to listening and talking to as many of you as possible over the coming months.

Admitting that the world around us is changing at a vast pace, I see this as a great opportunity to improve the world we live in. As readers I would like you to help further this opportunity by voicing your ideas and opinions throughout 2012.

Good or bad, we appreciate any feedback as it keeps us grounded and helps us improving your world.

Happy reading!

Janet Wiegman, General Manager



Content

Welcome

News

Rehabilitation

Sound Talks

Did You Know

Inspiration

Events

The Sound of Southern ENT

Editor's Note

NEWS

Listening and Spoken Language SA: Professional Training

Professionals who completed a year-long training programme with Cochlear-Southern ENT and Warren Estabrooks in 2010, are rolling out a short course in 2012 that will be run through the Department of Speech, Language and Hearing Therapy at the University of Stellenbosch. The course will focus on the development of spoken language acquired through listening in babies and infants who are hearing impaired. The course is aimed at speech therapists, audiologists and teachers who are working with hearing impaired children and their families. Approximately 15 professionals from across the country will take part in this year's course which will run from March 2012 until February 2013. For more information you can send an email to lslsouthafrica@gmail.com.



REHABILITATION

Sound Foundation for Babies

This 40-week program is aimed at children fitted with appropriate amplification and based on Auditory Verbal Therapy principles. The sections, divided into an audition section, expressive and receptive language, songs and rhymes empower parents in helping children to develop spoken language and must be used with a therapist's guidance. The activities are designed to fit easily into everyday life. Following on from this series is Sound Foundations for Toddlers, 24 to 36 months of age, to support parents through the second year after cochlear implantation: Sound Foundation for Babies costs **R650** and can be ordered from roenel.k@southernear.com (10 days ordering time). Or it can be downloaded free of charge, here: [sound-foundation-babies](#) / [sound-foundation-toddlers](#). **Clinics are recommended to acquire these series to help guiding patients through this important phase after implantation.**



News Flash

Centralised assistive listening device resource centre opens in Tokai

Hearing impaired people can now trial various listening and living devices at a new demo and display resource centre in Tokai. Audiologist Francis Slabber explains that most of the devices are generic and work with T-Coils so should work with most hearing aids. The range is affordable, serviceable and easy to install. Patients are invited to pop in, and professionals can refer patients to Francis' rooms in Tokai on Tuesdays and Thursdays. Contact her on 021 – 797 7948 or francis@drsteer.co.za

Cued Speech

Adri Greeff, speech therapist at the Reuben Birin School for the Deaf in Port Elizabeth wrote to us about Cued Speech (CS) as an effective method to help deaf children, including candidates for a cochlear implant or Baha, to understand spoken language. CS uses eight hand shapes in four positions near the mouth to clarify lip patterns of normal speech. It helps a deaf person to acquire an understanding of spoken language by literally visualising the sounds (seeing all sound based units of speech - 44 phonemes - as clearly as hearing people can hear them). CS can help with the transition after implantation, by linking the new sounds with familiar CS sounds/signs.

Adri says she wishes she had known about CS long ago since she now knows what value it could have added to her therapy with children prior to and after implantation. She is currently using CS in her therapy with a child who has cerebral palsy and a cochlear implant with amazing results.

For more information, contact Adri Greeff at four.adri@gmail.com.

SOUND TALKS



Sound Talks reflect on matters sounding from previous editions and readers' enquiries, feedback and activities.

Recent adult cochlear implant (CI) recipient: "This morning when I was out running I could hear a dry leaf scraping on the road as the wind blew it, couldn't believe it, so things are certainly working!"

Carel du Toit employee after announcing the Baha® kids as winners of our 2011 photo competition: "People like you at Southern ENT make a difference: not only do you give sound to our Baha children but you also make stars of them, you make them the centre of attention and give them the opportunity to shine their light."

Adult CI recipient after activating his 2nd implant: "It's amazing! I feel as if there is nothing short with my hearing. Until there is a loud background noise... then I remember that I'm deaf like in deaf!" 😊

Poem: Silindile is an audiologist at 1-Military Hospital and by observing the joys and sorrows of patients with hearing disabilities she wrote and shared this poem with Southern Sounds: [Silence](#)

CI parental support: Elmien Pieterse (Johannesburg), whose son received a Nucleus implant at the age of 2, offered to talk prospective parents through the CI process to address fears and uncertainties from a parent's view. Contact info@southernear.com to be referred to Elmien.

CI innovation: A mother from Pretoria designs strings to hold together her son's sound processor and offered to take orders at R30 per string (various colours). Contact info@southernear.com if you need to be linked up with Elise.



Back to content

Johannesburg Cochlear Implant Centre (JCIC)

1. **Who, when and why did you start a cochlear implant (CI) clinic?** JCIC was founded in February 2010 by Leone Nauta. Although CI has been done in Johannesburg since 1992 there was a need to centralize services and supply sustainable CI management.
2. **How have the programme developed since?** Our manpower has almost doubled. Today we consist out of 22 active members that include surgeons and part-time audiologists and therapists who either work in private practice or at schools in Johannesburg.
3. **Where are you located?** At the Wits Donald Gordon Medical Centre in Parktown. Surgeries take place at various hospitals including Linksfield Park, Union Hospital, Alberton, Wits Donald Gordon, Morningside and Garden City.
4. **How many patients have you implanted?** 87
5. **What are the ages of your youngest and oldest patients?** 18 months and 86 years of age
6. **Where do you get referrals from?** Often word of mouth or from audiologists in and around Johannesburg.
7. **Are there many babies referred?** Sadly, very few babies are referred. We would love to see that audiologists and paediatricians realise the importance of proper parent counselling and refer these babies to a qualified LSL therapist.
8. **What other institutions do you collaborate with?** The Centre for Speech, Language and Hearing Impaired Children and St Vincent School for the Deaf and numerous mainstream schools to ensure suitable educational placement. We are also the Gauteng distributor of Bellman assistive listening devices and work closely with Hearability and the National Council for Persons with Disabilities.
9. **What do you regard as vital at your clinic?** Record keeping, communication between team members and professionals in this industry and efficient service from CI product and service providers.
10. **One of your best moments?** Our 1st team meeting as a united group of professionals! Also, the day when Fanie du Toit and JCIC joined forces to support persons with a profound hearing loss. Since then we have daily moments experiencing the difference this great technology makes in people's lives.
11. **Your top tip to professionals who consider starting a CI clinic?** Find a sustainable partner that will still be there when you are not. Cochlear implants are for life and so should be the service. Never build a program around a person. It is all about the team and its belief that all efforts will benefit the patients in the long run.
12. **You top hearing tip to patients?** Perseverance. Enjoy the little bits of hearing in the beginning and stick to your therapist's guidance.
13. **JCIC can't do without?** Our team, our patients and our coffee!



Therapists linked to the JCIC, clockwise: Paddi Roux, Almeri Scott, Sherri Taljaard, Leone Nauta, Estelle Roberts, Kerry-Lee Galliard, Leanne Ponte, Wendy Deverson

Groote Schuur Hospital Baha Clinic

1. **Who, when and why did you start a Baha program?** We at the Audiology department were getting frustrated with the limited options for patients with either no ear canals or chronically infected ears. The patients on their part complained about the bone conductive aids that were uncomfortable to wear and unsightly. We kicked off our Baha program in March 2011.
2. **How many patients have you implanted since?** 5
3. **Where do you get referrals from?** Most of the patients are from Groote Schuur Hospital but with the press coverage of our launch we do get referrals from all around Western Cape.
4. **Are there many babies referred?** We have had one baby with single sided deafness but due to financial constraints we have concentrated mainly on bilateral impairment.
5. **What do you regard as vital at your clinic?** A team approach. Firstly, the audiology department notifies us of potential patients. Then a multi-disciplinary team discusses various surgery and hearing amplification options, as well as evaluates patients' social circumstances. A very dedicated nursing team takes care of the abutments and do hygiene counselling. They basically offer patients a "5 days a week walk in service" and a Xhosa sister interprets to patients if needed. Another part of our team is Southern ENT that guided us excellently from the start. Its Baha clinical support specialist is always present during surgeries and otherwise just a phone call away. Other indispensable role players include our Medical Superintendents who shared our vision despite budgets constraints.
6. **One of your best moments?** Each time when a face lights up when we fit a Baha processor!
7. **Your top tip to professionals who consider starting a Baha clinic?** Make sure to see your patients regularly to ensure the abutment stays skin-free. Also, do not let your heart do all the talking and make sure the patient will comply with the post-surgery care that is needed. Think realistically about every implant. This is an expensive operation compared to wearing conventional hearing aids.
8. **Your top hearing tip to patients?** Comply with the post-surgery care that is needed.



Groote Schuur Hospital Baha team, from the back clockwise: Shanaaz Marlie, Dr Estie Meyer, Megan Ferguson, Sister Libala, Sharon Pithey

DID YOU KNOW

- Did you know you can connect your Nucleus® Sound Processor directly to an electronic gadget like an iPod/iPad? Check out these options offered by Cochlear™ to enjoy the best of music and entertainment.

[Nucleus 5 audio cable](#)



[Nucleus Freedom audio cable;](#)



[Nucleus 5 Bilateral Cable](#)



- Did you know you can listen to music clearly with your personal audio cable when you are in a noisy environment? If you have a Nucleus 5 Sound Processor and Remote Assistant, you can **adjust the mixing ratio** to have your microphone pick up less background noise. **Visit page 48** in the [Nucleus 5 User Guide](#) to learn how to adjust your mixing ratio. Your clinician will have to enable this feature on your Remote Assistant if you are currently unable to adjust your mixing ratio. If you have a Nucleus Freedom Sound Processor, you will need to visit your audiologist to adjust your mixing ratio.
- Baha® patients: A just launched website (EarCommunity.com) is the first to offer support and resources to individuals and families around the world living with Microtia/Atresia and associated syndromes including Hemifacial Microsomia, Treacher Collins and Goldenhar Syndrome. The new website provides practical information, advocacy resources, surgical and technology solutions, inspirational stories, news and latest research and most importantly, an opportunity for families and individuals to connect with a supportive online community.
- Children with cochlear implants rate their quality of life as highly as children with normal hearing, according to one of the first studies that looked at children as well as their parents. [Read more](#)

News flash

Nucleus® implants now also in Kenya and Nigeria:

*The Nairobi Hospital is the new CI centre in Kenya, with Ear Nose and Throat surgeons,
Dr Mujahid Din and Prof Muthure Macharia.*

And in Nigeria the first surgeries were done at the Abuja National Hospital with Dr Abiodun Olusesi.

For more information or to be connected with the local distributors, audiologists, AVP therapists or schools in these countries, contact info@southernear.com.

Viva Africa!

EVENTS

What	When	Where	Who	Contact
SACIG Meeting	12-13 May	University of Stellenbosch, Medical School	Cochlear implant professionals, (parents or implantees are welcome)	Jenny Perold Tel 021 – 938 5086
<i>A clinical and academic conference aiming to create a forum for cochlear implant professionals who strive to provide a high standard of service delivery to patients. www.sacig.org.za</i>				
Workshop: Demystifying cochlear implants	23 May	Bloemfontein (venue to be confirmed)	Referring audiologists	Tamara van Zyl 076 150 6008 / tamaravanzyl@gmail.com
<i>Insightful sessions on topics like new-born hearing screening, CI evaluation, surgery basics, CI for adults, the 1st few months after activation, rehabilitation, etc.</i>				

Back to content

PRODUCT SOUNDS

Significantly improved hearing performance with the new high power Cochlear™ Baha® sound processor

A recent clinical study examined the outcomes of the new high power Baha Sound Processor compared to the previous gold standard (the Baha Intenso™). A total of 20 patients with mixed hearing loss participated in the study. The results showed that, on average, the Baha 3 Power provided superior speech recognition in noise compared with the previous generation of Baha Sound Processors. Overall, the use of the Baha 3 Power (with directional microphone) demonstrated a mean improvement, in noisy listening situations, of 4.8 dB (SNR) over the Intenso Sound Processor. Clinically, this corresponds to an improvement of more than 50% in speech recognition in noise.



Contact your audiologist to upgrade to the Baha 3 Power sound processor in 2012



Cochlear HOPE Words App: An auditory rehabilitation App for iPads and iPhones

Children and parents love this app! This version of the HOPE Words app features the full alphabet for easy learning of the different sounds in the English language. Your child will simply touch on the word or image, and the image will enlarge with a voice narration. Also, the HOPE Words app features parent and professional tips on how to use the app to improve listening and spoken language with children. Unfortunately this is not yet available in the South African App store. However, people who would like to become a copy can contact our CI clinical support specialist at tamaravanzyl@gmail.com.

Nucleus lifecycle and backward compatibility matters

Southern ENT recently asked Sebastian Krämer, Product Manager, Cochlear AG what products are becoming obsolete when, what is upgradeable to what and when and what this all means to our clients. Herewith his incisive reply:

Backward compatibility: "Cochlear's mission of 'Hear now. And always' embodies the company's commitment to providing its recipients with the best possible hearing performance today and for the rest of their lives. The Cochlear Nucleus CP810 Sound Processor is currently compatible with the Freedom (CI24RE) implant, as well as with the Nucleus 24 implants. The Freedom Sound Processor has been made backwards compatible with the Nucleus 22 implant. Cochlear is looking forward and investigating technologies that may be used in future generations of sound processors. The next sound processor being compatible with Nucleus 22 implants is planned to be the successor of CP810. At this stage, there are no launch dates available for any of these projects".

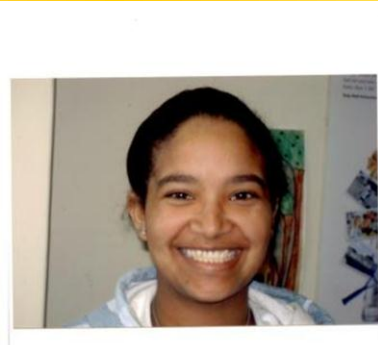
Lifecycle: "Cochlear Europe has now reached the final phase of the lifecycle for our Nucleus 3 system products: the N24 series implants, the SPrint™ sound processors, the ESPr™ 3G sound processors and the ESPr™ 3G for N22 sound processors. Although Cochlear Europe no longer sells these products, recipients may continue to use the SPrint or the ESPr 3G sound processors as long as they are functioning. Cochlear will continue to provide service and support for those processors until January 1st 2018. However, due to a limited availability of spare parts, service and repair cannot be guaranteed. Should a SPrint, ESPr 3G or ESPr 3G for N22 sound processor require repair, recipients will have the following options:

1. Before January 1st 2017, the SPrint or ESPr 3G sound processor can be repaired under Cochlear Europe's existing repair policy.
2. After January 1st 2017, repair of the SPrint or ESPr 3G sound processor is subject to spare part availability.
3. After January 1st 2018, repair of the SPrint or ESPr 3G sound processor will be no longer available."

Back to content

INSPIRATION

National Disability Award Finalist – Soné Crouch



Cochlear implantee, Soné Crouch, was accepted onto the Sanlam Learnership Training Programme for People with Disabilities in 2011. She was awarded best agent of the month for 5 consecutive months, nominated for the company's Young Leader Award and eventually made it to the finals of the National Disability Awards. The winners were announced at a ceremony in Johannesburg on 2 December 2011. Soné did extremely well and her achievement is applauded by the cochlear implant industry. During the event, INSETA CEO, Sandra Dunn, quoted Vikas Khanna (disabled Indian chef, entrepreneur, sculptor and singer), saying that one day, she believes, everyone will see that "disability is the inability to see ability". [Read the full newspaper clipping here](#)

Soné had progressive genetic hearing loss since 10 years of age and received a cochlear implant through the Tygerberg Hospital-University of Stellenbosch Cochlear Implant Program (THUSCIP) in 2009, during her Grade 11 year.

Information by Jenny Perold – THUSCIP

THE SOUND OF SOUTHERN ENT

Tel: 012 – 667 4460/4971

Cell: 073 803 9682

Fax: 012 – 667 2362

Fax to email: 086 623 4909

www.southernear.com



EDITOR'S NOTE

With this being our 1st edition of Southern Sounds, 2012, one thing is certain: most people the world over began 2012 with a few New Year's resolutions. The question is, how many resolutions were translated from thoughts to deeds? Saying this, I would like to quote two people and hope to find something in between to aspire to this year:

1. Vikas Khanna, disabled Indian Chef, Entrepreneur, Sculptor and Singer:
"Disability is the inability to see ability"
(also see section on INSPIRATION above)
2. Jodie Foster, actress:
"Normal is not something to aspire to, it's something to get away from"

May we all aspire in 2012 to go beyond normality in living out our abilities!

Next edition: June 2012. We crave sharing your beyond normal stories.

Nicolene Steynberg – Editor

012 – 667 4460

info@southernear.com

Back to content